

# BELLEVUE NEBRASKA - POLICE DEPARTMENT

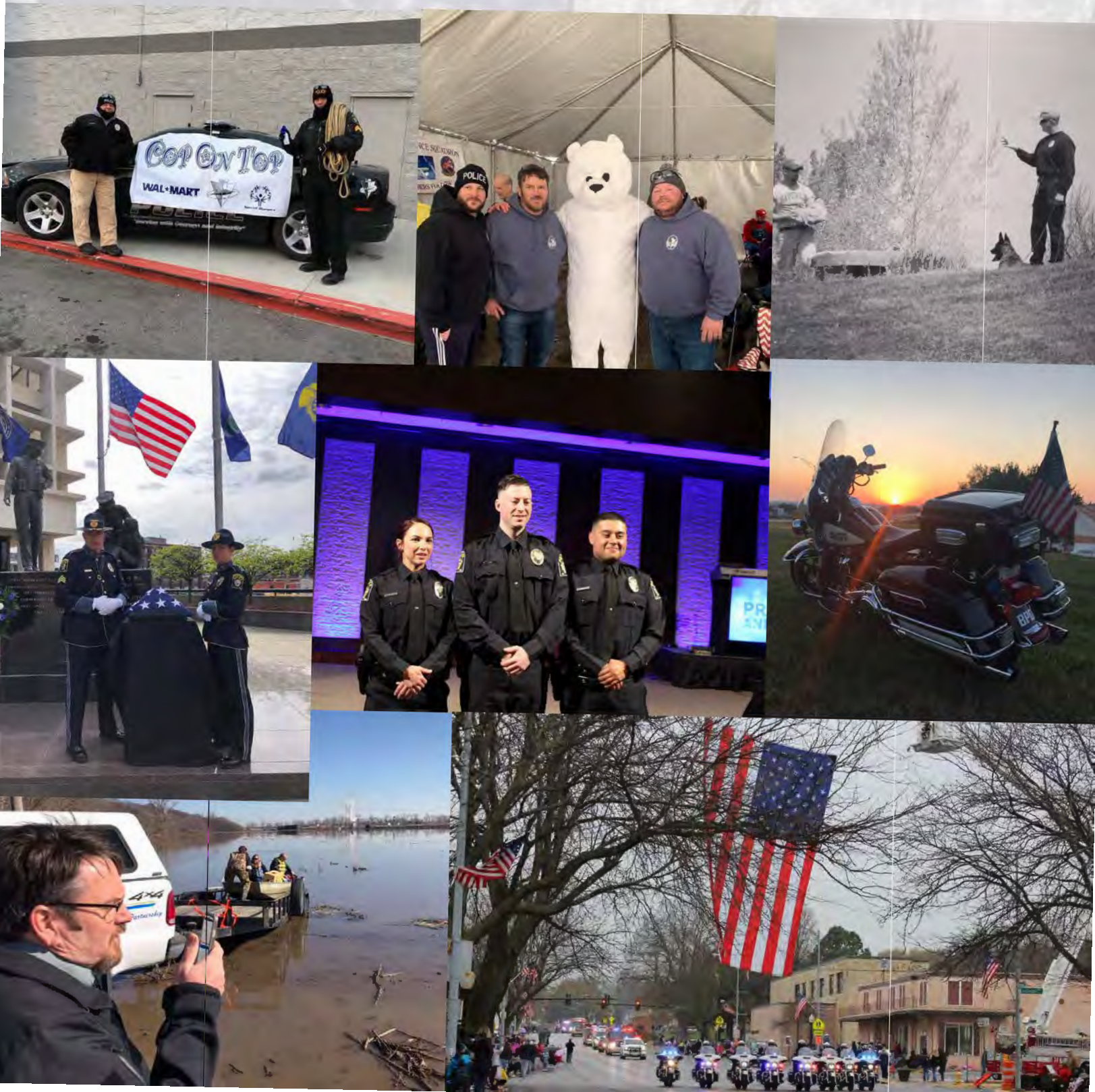


## 2019 - 2020 ANNUAL REPORT



# REPORTING PERIOD

The Bellevue Police Department 2019 – 2020 Annual Report is based on the time period running from July 1<sup>st</sup>, 2019 – through June 30<sup>th</sup>, 2020. The only exception being the Officer of the Year – which is selected for the calendar year 2019.





# MESSAGE FROM THE CHIEF

Welcome to the Bellevue Police Department Annual Report and thank you for taking the time to learn more about our organization. As our Mission Statement reads, “we are a proud and dedicated group of men and women committed to enforcing the law and serving our community’s public safety needs.” We are honored to serve Bellevue, and are dedicated to providing service with integrity and courage.

The Bellevue Police Department serves an ever-growing population in the third largest (and best) city in Nebraska. Our staff includes approximately 100 sworn police officers – in numerous divisions and operational units, as well as numerous civilian staff members and dedicated volunteers – who are all focused on our core values of Integrity, Courage, and Service. Our officers and staff have a primary focus of responding to the community’s public safety needs, and doing so in the most effective and efficient ways – as stewards of safety in a fiscally responsible way. Ensuring the safety and well-being of our citizens and visitors, helps provide security and prosperity within our great community.

The Bellevue community has a city administration – which includes a city administrator, mayor, and city council who are dedicated to a relentless pursuit of improvement and public safety. At the Police Department, we share this commitment and encourage you to share your innovative ideas to improve our police services. Please feel free to contact me by email or phone with suggestions or comments. I can be reached by office phone at 402-293-3048 or by email at [ken.clary@bellevue.net](mailto:ken.clary@bellevue.net).

As your police chief, I strive to connect with the community, maintain open lines of communication, foster an atmosphere of transparency, and work collaboratively in order to meet the needs of the community. We encourage community members to participate in our numerous community-related programs and safety events hosted by our Department. You can also follow those efforts on our department Facebook and/or Twitter (@bellevuepolice).

I thank you continued support and partnership with our agency. It is my great honor to serve you, and the great members of the Bellevue Police Department. I am honored to be a member of, and to serve, such a wonderful community.

**Chief Ken Clary**

A handwritten signature in black ink, consisting of a stylized 'K' followed by a large loop and a trailing flourish.



# CHIEF CLARY'S BACKGROUND

Chief Ken Clary was sworn in as the Bellevue Police Chief on September 1, 2020. Ken came to the City of Bellevue with over 26 years of law enforcement experience – having worked for the Iowa State Patrol from 1994 to September, 2020.

Ken received his Master in Public Administration degree from Upper Iowa University, and is currently a Ph.D. candidate in Criminology and Criminal Justice at the University of Nebraska Omaha. He was selected by the National Institute of Justice as a Law Enforcement Advancing Data and Science (LEADS) Scholar (where he served from 2016-2019). He also graduated from the FBI National Academy (Session 269), completed the International Association of Chiefs of Police (IACP) – Leadership in Police Organizations training, and Northwestern University's School of Police Staff and Command. He currently serves as an Executive Fellow for the National Police Foundation, as the Board Co-Chair for the IACP – Police Research Advancement Section, and was inducted into the Center for Evidence-Based Policing Hall of Fame in 2019. In October, 2020, he was selected as recipient of the IACP J. Stannard Baker – Lifetime Achievement in Highway Safety Award winner.

Ken has also served his community as a Special Olympics Torch Run Volunteer for several years. He currently serves as the Board Chair for the Food Bank of Iowa. Ken has been awarded the Iowa Governor's Volunteer Award on two occasions for his philanthropic efforts (2014 and 2016).





# BELLEVUE POLICE DEPARTMENT CORE VALUES

**INTEGRITY** – There is no other value more important than this one. We are honest in thought, word, and deed. We keep our promises. We are trusted by our peers, subordinates, supervisors, and the community. The consequences of having an integrity problem are devastating.

**COURAGE** – It takes incredible courage to venture into scenarios that most everyone else runs from. We have the courage to be brave in other people's darkest hour. We have the courage to fight and protect those that can't protect themselves. We have the courage to put ourselves in harm's way to protect one another. Just as important, we have the courage to do the right thing, even when it's difficult or unpopular.

**SERVICE** – We are dedicated and committed to serving our community as it pertains to their public safety needs. We help others before we help ourselves. We take pride in our selfless service to our community. We serve one another. Supervisors serve their staff. As subordinates, we serve our supervisors. We never take each other for granted. We are a collective whole serving one another as we serve our community.

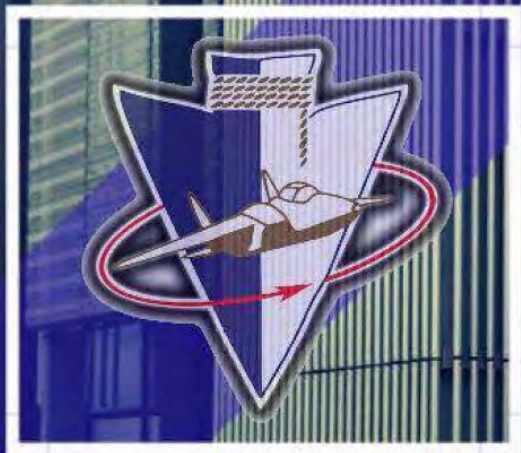
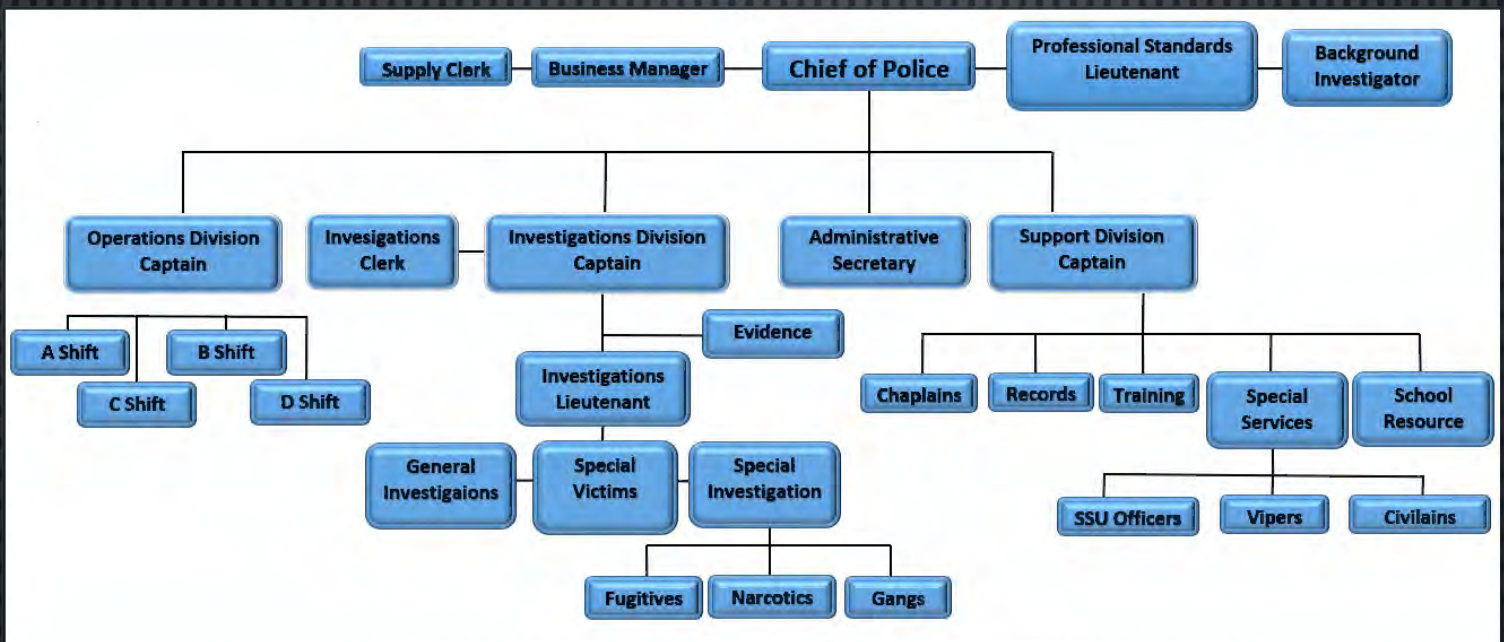
*"We are the Bellevue Police Department. We are a proud and dedicated group of men and women committed to enforcing the law and serving our community's public safety needs."*

# SERVICE COURAGE INTEGRITY



# BELLEVUE POLICE DEPARTMENT TABLE OF ORGANIZATION

The Bellevue Police Department is comprised of up to 100 sworn and 17 civilian employees. The Department is broken into three primary divisions (Operations, Investigations, and Support), as well as the Office of Professional Standards.



POLICE  
CITY OF BELLEVUE



# OPERATIONS DIVISION – PATROL

## OBJECTIVE:

The Bellevue Police Department Operations Division is organized to meet the needs of the Department and the City. It is comprised of four, 12-hour work shifts. The main focus of the Patrol teams is to respond to calls for service and to proactively work towards a reduction in crime, as well as traffic enforcement through proactive policing.

## OPERATING PROCEDURE:

The Bellevue Police Department has four shifts, each comprised of a Shift Commander at the Lieutenant rank, with two Sergeants acting as first line supervisors. These supervisors are split into coverage of the City north and south, with each supervisor currently overseeing four Officers and the north Sergeant overseeing an additional K-9 Officer. Each Officer is assigned to a marked patrol vehicle and works a solo assignment. All four shift Lieutenants report to a Captain who is the Division Commander. The Division Commander reports directly to the Chief of Police.

## PATROL ACTIVITY:

Calls for Bellevue Police services vary widely and require an extensive knowledge of law and police procedure. During this reporting period, Bellevue Police responded to **45,502** calls for service. Our most common calls for service ranged from officer-initiated traffic stops and business checks, to investigating suspicious activity and responding to disturbances.



# CRIMINAL INVESTIGATIONS DIVISION

## OBJECTIVE:

The Criminal Investigations Division (CID) is commanded by a Captain and a Lieutenant. CID is responsible for many different types of investigations including property crimes, violent assaults, sex crimes, domestic violence, fraud, and narcotic crimes. These cases involve a special subject matter, jurisdictional implications and are more time consuming. Detectives get their cases from either the Uniformed Patrol Division, Child Protective Services, or other Law Enforcement Agencies. CID is comprised of the following (3) units: Special Investigations Unit (SIU), General Crimes Unit (GCU), and the Special Victims Unit (SVU).

## SPECIAL INVESTIGATIONS UNIT (SIU):

SIU is comprised of a Sergeant and (6) detectives. They work a wide variety of hours due to the nature of their case work. SIU detectives are assigned to work cases involving narcotics, gangs, prostitution, fugitives and gun cases. Usually these cases involve handling Informants and these informants are either working off charges or are paid. In some cases we use an officer in an undercover capacity. These cases are usually long term and involve hours of surveillance and need special equipment.

## SPECIAL VICTIMS UNIT (SVU):

SVU is comprised of a Sergeant and (6) detectives. They are responsible for investigations of child abuse/neglect, sexual assaults, human trafficking, online child enticement and child pornography. The vast majority of the cases they receive are from the Nebraska Child Abuse Hotline and Nebraska State Patrol Cyber Tips. SVU detectives receive specialized training in child abuse investigations, homicide investigations, cyber-crime investigations, and sexual assault investigations.

SVU has one detective that specializes in domestic violence, adult sexual assault and vulnerable adult investigations. The initial report for these cases is typically handled by the Uniform Patrol Division and then sent to SVU for follow-up. The detective is a member of the Sarpy Coalition Against Sexual and Domestic Assaults (CASDA).

SVU has four detectives that specialize in child abuse and neglect investigations. They work with Child Protective Services Case Workers on all their investigations. They are tasked with arranging forensic interviews with Project Harmony in Omaha, which is the area's child advocacy center. Project Harmony has specialized child forensic interviewers and a child friendly interviewing environment. These investigations can be quite extensive and last several weeks.



# CRIMINAL INVESTIGATIONS DIVISION (CONTINUED)

## GENERAL CRIMES UNIT (GCU):

GCU is comprised of a Sergeant and (6) Detectives. They are responsible for investigating all crimes that do not fall under the purview of the SVU or SIU. They investigate burglaries, frauds, robberies, thefts, and homicides to name a few. The majority of cases that these detectives handle originate from the Uniformed Patrol Division. Patrol Officers take the initial report and forward it to the detectives for follow-up due to patrol not having time to follow-up.

GCU detectives frequently travel throughout the metro area during their investigations and collaborate with other Law Enforcement Agencies when cases cross jurisdictional boundaries.

The GCU has one detective that specializes in computer and cell phone forensic examinations (cyber-crimes detective). There is a dedicated computer forensic lab where the detective utilizes numerous hardware and software to extract data from electronic devices. Nearly every case that is investigated by the GCU requires some sort of electronic forensic examination. This detective specifically handles forensic examinations for General Crimes Unit Cases, but occasionally assists the SVU cybercrimes detective on complex cases.

## INVESTIGATIVE CASES:

	ASSIGNED	
	GCU	SVU
2019 - JUN	23	39
JUL	22	23
AUG	16	31
SEP	16	45
OCT	33	52
NOV	23	47
DEC	16	35
2020 - JAN	21	39
FEB	36	46
MAR	30	51
APR	21	32
MAY	26	41
JUN	16	54
TOTAL	299	535

## INVESTIGATIONS K-9:

CID is also home to one electronics detection canine. 'Quinn' is trained to assist in locating electronic devices that may contain contraband.





# SPECIAL SERVICES - K-9 UNIT

## OBJECTIVE:

The Bellevue Police Department has 4 Belgian Malinois – one that is assigned to each Patrol Shift in the City. Each K-9 Team is certified and specially trained. The Unit is responsible for a variety of tasks, including, but not limited to:

- Vehicle Sniffs
- Building Searches
- Officer Protection
- Physical Apprehension
- Demonstrations
- Tracking of suspects and missing persons
- Evidence Search

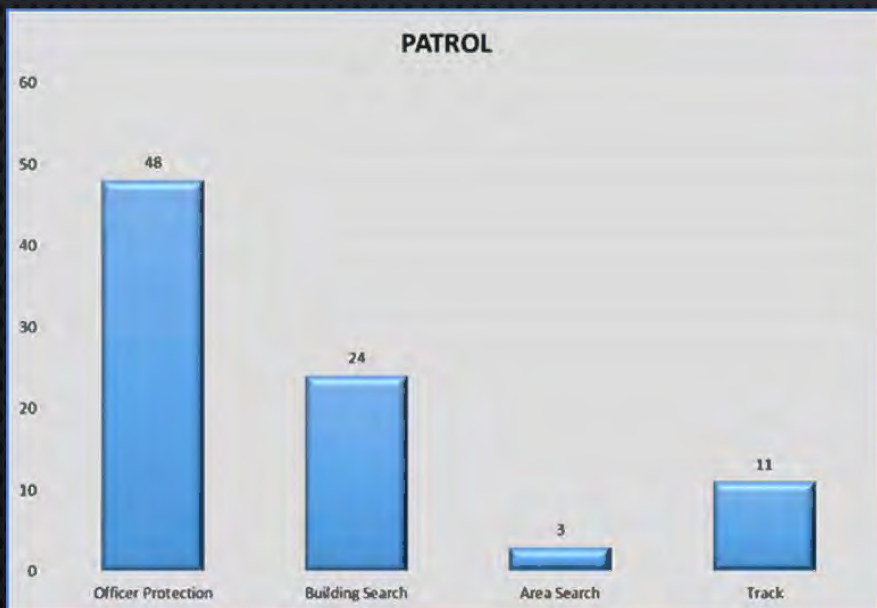


## ACTIVITY:

During this reporting period, Departmental K-9 Teams responded to assist other Agencies 94 times. A total of 530 training hours were completed by the K-9 unit in 2020.

In 2020, the Departmental K-9 Unit also completed a total of:

- 166 Narcotics Searches
- 86 Patrol Searches
- 15 Apprehensions





# SPECIAL SERVICES UNIT

## OBJECTIVE:

The Unit was initially established as a Community Policing Unit and has expanded its overall mission to include a multitude of tasks to include:

- Community relations projects and special events.
- Assist the Training Unit with new recruit pre-academy and pre-FTO training.
- Assist with department wide annual training in various fields to include, firearms, Defensive Tactics, Close Quarter Combat, Patrol Tactics.
- Selective traffic enforcement beyond what is provided by patrol teams.
- Department Liaison with multi-family housing areas managers.
- Support the Special Investigations Unit with uniform assistance.
- Support the department Unmanned Space Craft program.

## NORMAL ANNUAL EVENTS:

Werner Fireworks

Sarpy Kids Camp

Bellevue Together Backpack kick off

National Night Out (Everett Park)

Riverfest

Arrows to Aerospace Parade

Assist SRO's School Carnival

Walk for Life

Cops & Bobbers

Market 2 Market relay

Old Town Boo Bash

Veteran's Day Parade

Light Up Old Town

Holiday Heroes

Cop on Top

Polar Plunge

St. Patrick's Day Parade (Omaha)

Highland Games

Kids Camp/Easter Egg Hunt

Bellevue Half Marathon

Runway Run

Ride Of Silence

Half Marathon

LaVista Fireworks

LaVista Parade

Teen Citizen's Academy

Offutt air Show

Offutt Appreciation Picnic



# SCHOOL RESOURCE OFFICERS

## OBJECTIVE:

The Bellevue Police Department's School Resource Officers consist of four officers and one sergeant to oversee the unit. One officer is assigned the Bellevue East High School, Bellevue West High School, Bryan High School and Bryan Middle School.

The Bellevue Police Department's SRO Unit is committed to ensuring the safety of all students, staff and visitors at all schools in the City of Bellevue. This is accomplished by SROs being present and visible at the schools. Our SROs proactively address any suspicious and /or criminal activity that is seen or reported to them by students, staff or other citizens with concerns.

The Bellevue Police Department SRO Unit focuses on building positive relationships with the youth of this community. SROs build these positive relationships not only to prevent and deter at-risk youth from being involved in criminal activity, but in an effort to provide them the support and resources needed to be successful in life. SROs are not only tasked with acting in a law enforcement capacity, but also take on the informal roles of educators, counselors, mentors, etc.

- The SRO Unit has many goals each year, which include the following:
  - Ensure the safety of all students, staff and visitors
  - Educate students about drugs, alcohol and tobacco
  - Combat poverty and hunger amongst the youth in the city
    - Suicide Prevention and Depression Awareness
    - Combat bullying
- Combat child abuse, domestic violence, family violence cycles, sexual assaults, distribution of nude photos, misuse of social media, assaults, etc
  - Get youth more involved in the community
- Educate youth and parents/guardians about interacting with law enforcement
  - Educate parents / guardians about various youth trends





# RECORDS DEPARTMENT

## OBJECTIVE:

The objective of the Records Department is to create and house a permanent record of Police Department reporting, as well as support the county Attorney's Office in supplying completed reports for prosecution. They also supply the Investigation Units with patrol officers reports due for additional investigation, complete records checks for various entities as allowed by law, and process and distribute handgun Purchase Permit Applications and permits.

The Records Unit is comprised of three full-time and one part-time civilian staff members, and one civilian supervisor.

## SYNOPSIS OF ACTIVITY:

Incident Reports processed	4921
Supplement Reports	39008
Traffic Reports (copied/filed)	1255
Press Reports (copied)	871
Investigations reports (copied)	1590
County Attorney Reports (copied)	2987
Misc. Reports (copied)	2518
Adult arrests	1296
Juvenile arrests	478
FI cards (Processed/entered)	741
Citations (processed/entered)	3079
Driver's License/Pick up Orders (processed)	230
Lab Reports (copied/filed)	431
Records Checks	466
Incident Reports (scanned)	5639
Handgun Permit Certificates	225
Court Notices (processed)	1791
Transcription: Hours OF transcription	2248



# OFFICE OF PROFESSIONAL STANDARDS

## OBJECTIVE:

The Bellevue Police Department's Office of Professional Standards is responsible for the timely and thorough investigation of ALL allegations of employee misconduct. The unit is responsible for

- Investigating and documenting all investigations
  - Sworn Police Officer Hiring
- Media Relations – Public Information Officer (PIO)
  - Terminal Agency Coordinator (TAC)
- Writing, housing, and modifying policy using PowerDMS
  - Email and telephonic Department inquiries
  - Maintaining Use of Force records
- Supervising Department social media accounts
  - Maintaining personnel files
- • Coordinating with and assisting the Legal Department on various matters, including personnel issues, threats of lawsuits, and policy implementation





## 2020 - 2021 INITIATIVES

The Bellevue Police Department's has identified the following areas of focus for 2021:



### **2021 Initiatives**

#### **SAFE ROADWAY INITIATIVES**

**IMPAIRED DRIVING**

**DISTRACTED DRIVING**

**SEAT BELT/SPEED VIOLATIONS**

#### **SAFE COMMUNITY INITIATIVES**

**NARCOTICS ARRESTS**

**WEAPONS VIOLATIONS**

**LOW RESPONSE TIMES**

**INVESTIGATIVE CLEARANCE RATES**

**COMMUNITY ENGAGEMENT**

**VEHICLE THEFTS/BREAK-INS**

#### **OFFICER INITIATIVE**

**OFFICER READINESS TRAINING**

**SERVICE-COURAGE-INTEGRITY**



# EXCELLENCE IN POLICING COMMITTEE

The Bellevue Police Department strives towards excellence on a daily basis. We also try to recognize our officers for outstanding service. The Excellence in Law Enforcement Committee meets quarterly to review officer submissions which out interactions that exceed expectations. One officer is selected each quarter (as Officer of the Quarter) based on their outstanding work. From those four selections each year, one officer is selected as the Officer of the Year.

## Officer of the Quarter

**1<sup>st</sup> Quarter – Detective Cassandra Ward**

**2<sup>nd</sup> Quarter – Officer Sean Jimerson**

**3<sup>rd</sup> Quarter – Officer Jamey Murray**

**4<sup>th</sup> Quarter – Officer Molly Wirtz**

## Officer of the Year

**Detective Cassandra Ward**

Detective Ward was chosen as the 'Officer of the Year' based on her actions during two major events during the 1<sup>st</sup> Quarter. The first was an occasion where she responded to assist Officer Jamie Murray with a recovered stolen vehicle. Their combined work yielded two stolen vehicles, as well as multiple narcotics charges and other stolen items.

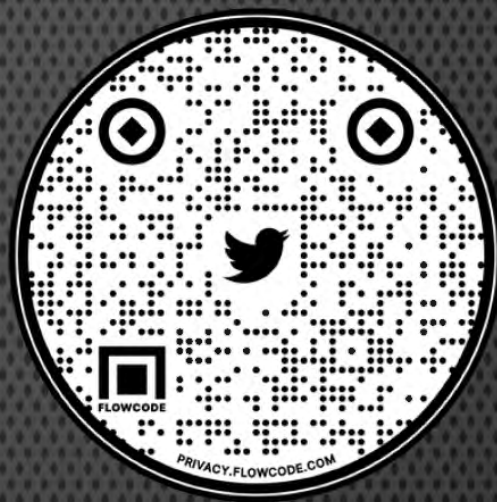
The second was due to her response to a homicide scene, and her associated work. In the end, her work led to the recovery of the murder weapon, an additional stolen weapon utilized in a shooting in Omaha, as well as a confession by the homicide suspect.



FOLLOW THE BELLEVUE POLICE DEPARTMENT

ON TWITTER

OR



FACEBOOK

OR CHECKOUT OUR YOUTUBE CHANNEL  
[WWW.YOUTUBE.COM/BELLEVUEPOLICEDEPARTMENTNEBRASKA](http://WWW.YOUTUBE.COM/BELLEVUEPOLICEDEPARTMENTNEBRASKA)



SCAN ME



